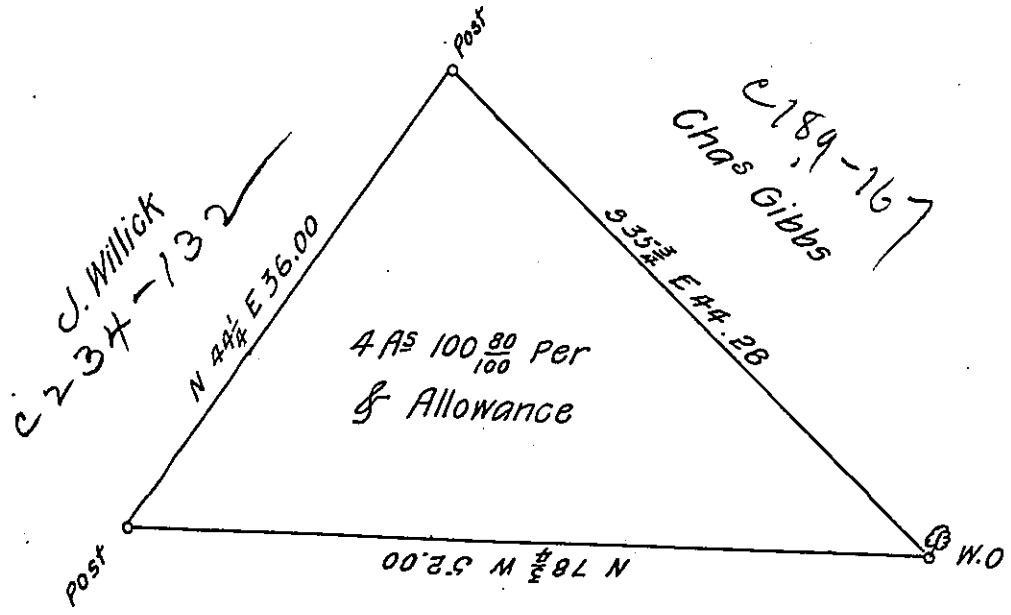


52  
H71-34  
5-112



J. Willick  
C-39-68

*Draught of a Piece of Land. Situated in Mifflin Township Allegheny County Penna.  
Surveyed November 4<sup>th</sup> 1870 in pursuance of a Warrant granted to Charles S. Fetterman  
dated 23<sup>rd</sup> day of May 1870. Containing 4 Acres 100 <sup>80</sup>/<sub>100</sub> Per & Allowance of six  
per cent for Roads &c.*

*R. L. McCully C.S.*

*To Jacob M. Campbell  
Surveyor General.*

*IN TESTIMONY that the above is a copy of the original remaining on file in  
the Department of Internal Affairs of Pennsylvania, made  
conformably to an Act of Assembly approved the 16th day of  
February, 1833, I have hereunto set my Hand and caused  
the Seal of said Department to be affixed at Harrisburg,  
this nineteenth day of December 1904.*

*Jacob P. Brown*  
Secretary of Internal Affairs